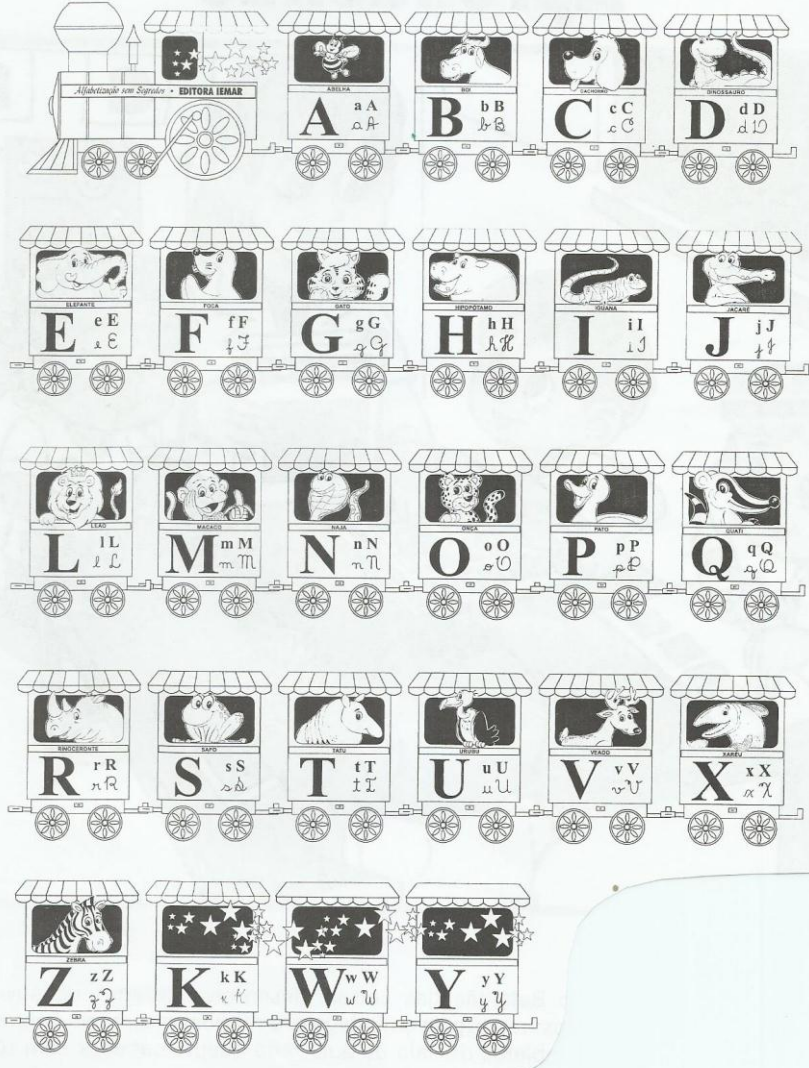


# O Alfabeto

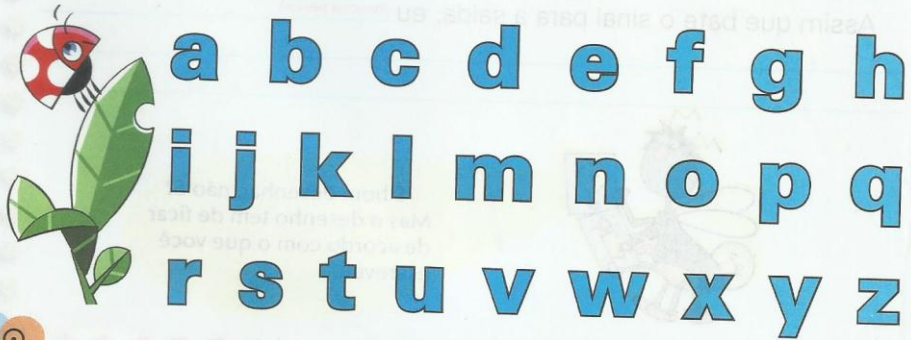
## Trenzinho da Alegria



Maiúsculo



Minúsculo

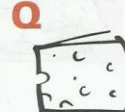




Ilustrações: Editora do ano



Fernandes e Gilmar



Fernandes e Gilmar



Fernandes e Gilmar



# LETRAS CURSIVAS MINÚSCULAS

a b c d

e f g h

i j l m

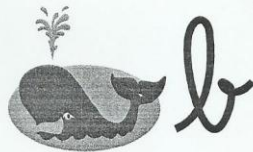
n ò p q

r s t u

v x z

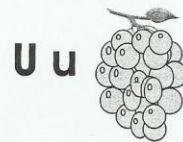
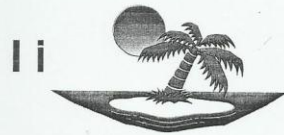
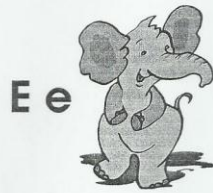
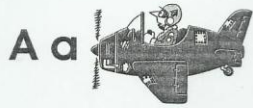


72





# VOGAIS



# LETRAS CURSIVAS MAIÚSCULAS

A B C D  
E F G H  
I J K L M  
N O P Q  
R S T U  
V X Z



A



B



D

# LETRAS DE FÔRMA MINÚSCULAS

a b c d e

f g h i j

l m n o p

q r s t u

v x z



70

a



b



d

# LETRAS DE FORMA MAIUSCULAS

A B C D E

F G H I J

L M N O P

Q R S T U

V X Z



A



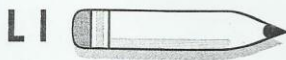
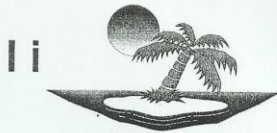
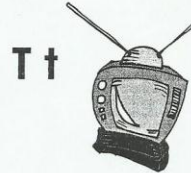
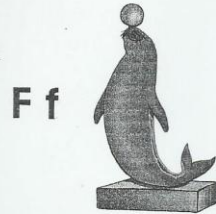
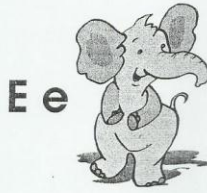
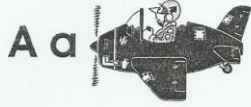
B



D



# ALFABETO ILUSTRADO



# VOGAIS

**A**  
  
ABELHA

**E**  
  
ELEFANTE

**I**  
  
IGUANA

**O**  
  
OVELHA

**U**  
  
URSO

# CONSOANTES

**B**  
  
BALEIA

**C**  
  
COELHO

**D**  
  
DINOSSAURO

**F**  
  
FOCA

**G**  
  
GATO

**H**  
  
HIPOPÓTAMO

**J**  
  
JACARÉ

**L**  
  
LEÃO

**M**  
  
MACACO

**N**  
  
NAJA

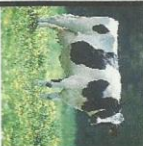
**P**  
  
PATO

**Q**  
  
QUATI

**R**  
  
RAPOSA

**S**  
  
SAPO

**T**  
  
TATU

**V**  
  
VACA

**X**  
  
XEXÊU

**Z**  
  
ZEBRA



# Articulemas - Fonemas

